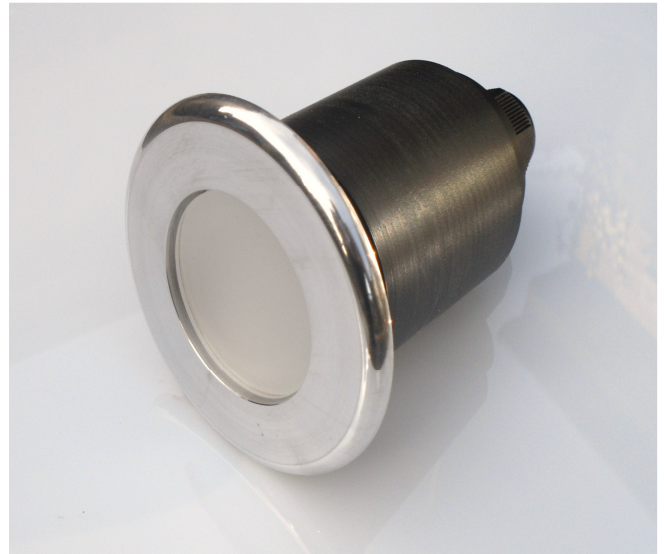


# WT1 Flush fit 720 Lumens 9W & RGB 3W High power underwater LED light

The WT1-720 Lumens offers 100% flood set in an extremely elegant flush fitting housing.

Designed to replace the old inefficient and hot halogen light. Fixing application, certkin puddle flange.

Form and function combined to enhance modern lighting systems that demand high light output with 100% controllability, near zero heat projection and extreme reliability.



## Mechanical

Case material	Aluminium (6000 series)
Case finish	Anodised (15 thou.) stainless steel effect or to custom finish.
Lens material (main)	3mm Ploy methyl methacrylate (PMMA)
Lena material (top)	3mm Glass
Diameter (overall)	80mm
Flush fit (rim protrusion)	4mm domed effect
Rear	44.5mm diameter 30mm long
Lens (top) diameter	44mm (3.5mm thick)
Light aperture	43mm
Weight	150 grams
Fixing	1mm pitch X 4 start thread
Rear cable gland	IP68
Rating	IP68



## Optical

Luminous Flux (total)	720 Lumen white
RGB	3 Watt Versions
Colour	6000,4100*, 3000* deg K (cool neutral, warm
CRI (colour rendering index)	90
Light maintenance	>70,000 hours (to 70% light flux @ 100% duty)
Ultra-violet emission	Zero

## Temperature

Maximum case temperature	50 deg C (20 deg ambient)
--------------------------	---------------------------

## Electrical

Digital control	(dimming with a single S wire)
Power dissipation	9 watts.
Power voltage	24V DC.
Three wire connection	Red + Blue 0 Green S
Full digital control	