

WT3-Lamp installation Kits.

The WT-Lamp installation kit is simple to install and cost effective. Using standard PVC Industrial pipe, the WT Lamps push inside the pipe using its O ring to hold in place and secure a water tight seal. The end cap is fitted with conduit which is IP68 rated this adds to the waterproofing. When you come to install the lamps sealant can also be placed around the lamps rear face area to complete the sealing process. The lamps fit flush against the pool wall giving a flush finish. By using the O ring application the Lamps can be removed if necessary.



Mechanical

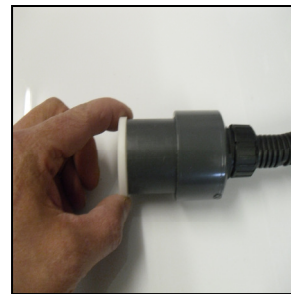
Pipe	PVC Durapipe inner wall thickness 4mm
Pipe Size	WT3-1 ¼ inch
End cap	WT3-25mm
Conduit	IP68 PVC Flexible



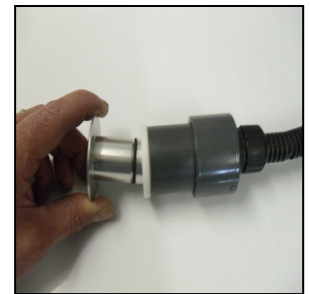
End cap with IP67 conduit



Pipe inserts in to conduit



Render adaptor inserts in to pipe



Lamp inserts in to adaptor



Pipe work concreted into pool wall



Adaptor inserts into pipe work



The 5 mm lip allows tile or render to be applied without covering the pipe work inserts into pipe work



Finally the lamp is inserted into adaptor, giving a flush finish