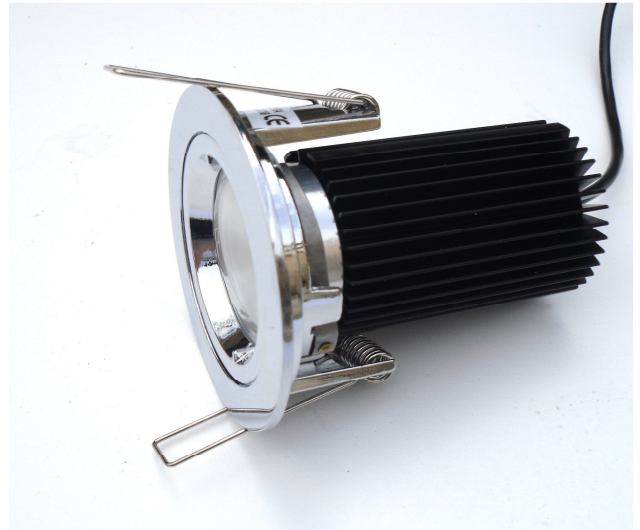


# L50A

## 720 Lumens 9W High power LED light

The L50A is a robust and powerful LED light. Designed to replace inefficient and hot 50mm MR16 and GU10 halogen lighting. Solid and functional, designed to enhance modern lighting systems that demand high light output with 100% controllability, near zero heat projection and extreme reliability. Optimized thermal design and optics, in a solid machined and extruded case with built in digital driver allow use in existing mechanical MR16 and GU10 fittings.

**\*\* note these are 24VDC units**



### Mechanical

Case material Aluminum (6000 series)  
Case finish Anodized (15 thou.), bright anodized (cavity), black heat-sink  
Lens material Poly methyl methacrylate (PMMA)  
Diameter (cavity) 50mm  
Diameter (heat-sink) 47mm  
Depth 82mm overall, (heat-sink 65mm)  
Lens diameter 38mm (3mm thick)  
Light aperture 35mm  
Weight 165 grams  
Fixing MR16 & GU10 standard fittings

### Optical

Type Custom reflector cavity (60 degree)  
Luminous Flux (total) 530 Lumen  
Colour 6000, 4100\*, 3000\* deg K (cool, neutral\*, warm\*) \*optional  
CRI (colour rendering index) 90  
Light Maintenance >70,000 hours (to 70% light flux @ 100% duty)  
Ultra-violet emission Zero



### Electrical

Power dissipation 9 watts (maximum @ 100% duty)  
Voltage 24VDC  
Current 395mA  
Driver Internal Zetex 1, constant current switch mode (built into heat-sink)  
Control Digital via 'S' wire of Zetex 1 driver, PWM (pulse width modulation)  
Electrical connections 3 wires (+24VDC = Red, Sig = Green, 0V = Blue)  
On/Off time 4mS

### Temperature

Case power dissipation 9 watts  
Maximum case temperature 55 deg C (at 20 deg C ambient)

### Environmental

Fire rating 90 minutes (minimum)  
IP rating 66

### Binary